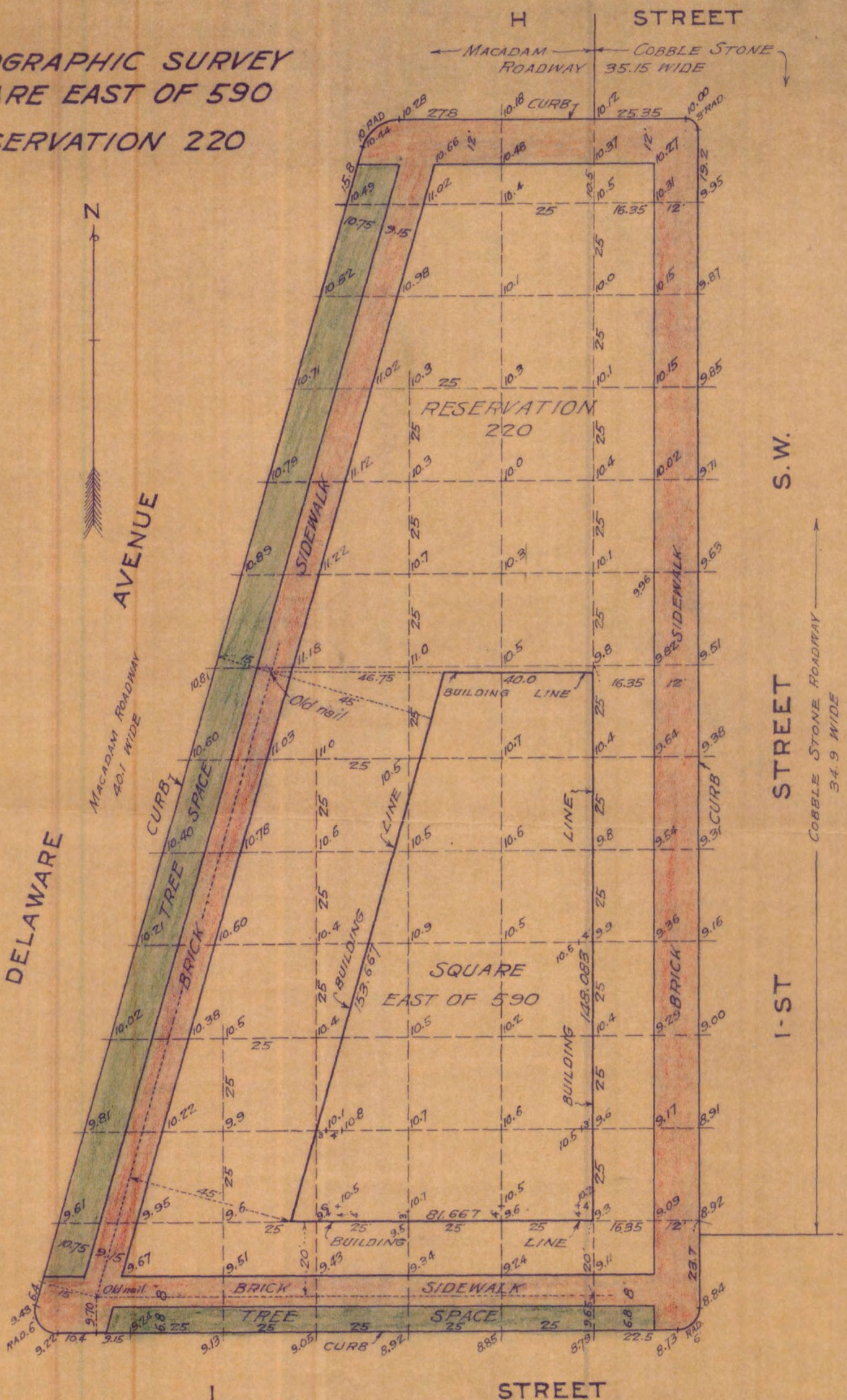


TOPOGRAPHIC SURVEY
 SQUARE EAST OF 590
 RESERVATION 220



Benchmark:
 Top of fire hydrant S.E.
 Corner of Delaware Avenue
 and I Street S.W. El. = 12.22

MACADAM ROADWAY
 32.1 WIDE

SURVEYORS OFFICE, DISTRICT OF COLUMBIA

Surveyed and checked
 by: *F.D. Carr*
 ACTING ASST. ENGINEER.

Made for Capt. H.S. Bishop Jr.
 S.O. 24243
 Scale: 1-inch = 20 feet.

Survey Book 127 Page 59

Surveyors Office, D.C.
 January 5th 1939.
 I certify that the survey shown
 hereon is correct.

E. E. ...
 Surveyor, District of Columbia

Board of Zoning Adjustment
 District of Columbia
 CASE NO. 19451
 2-11-41 10.38D

MAP # 2168